

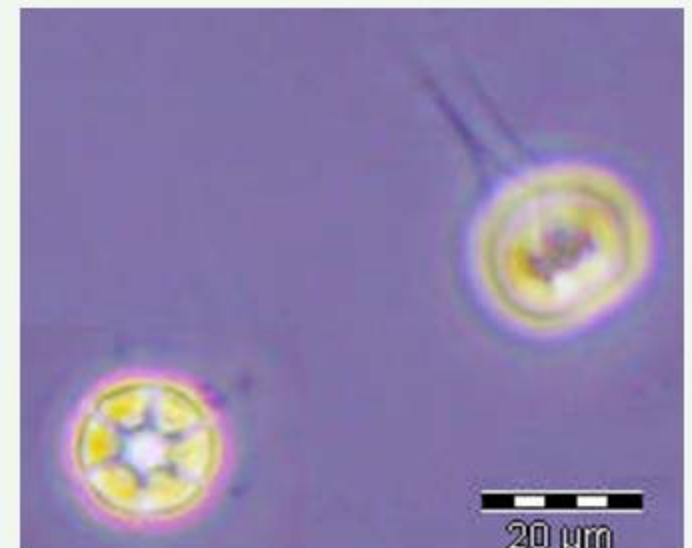
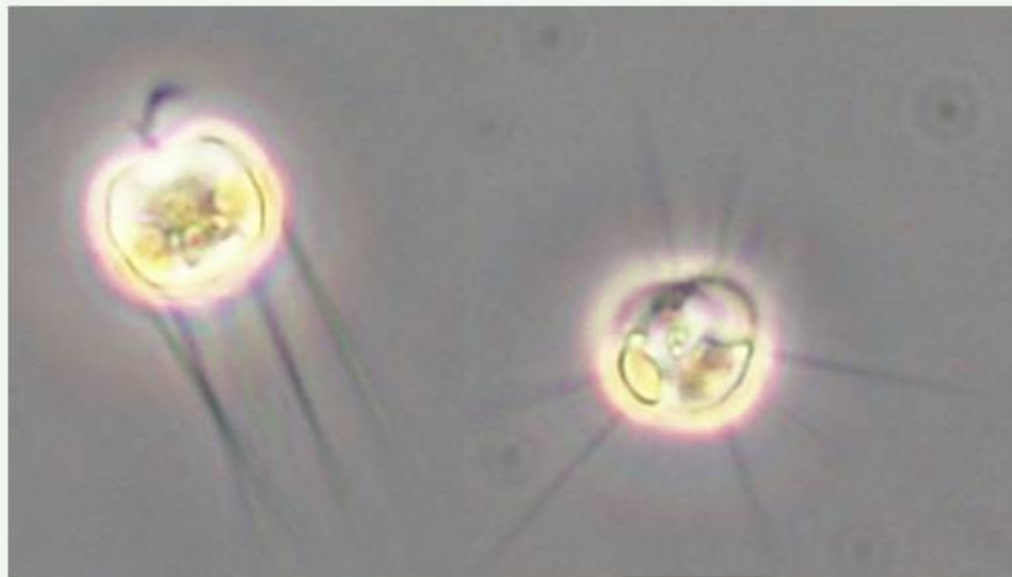
# phytoplankton - chrysophyceae

## *Apedinella radians*

abundance: spring, summer

life-form: solitary

length: 6,5-10 $\mu$ m

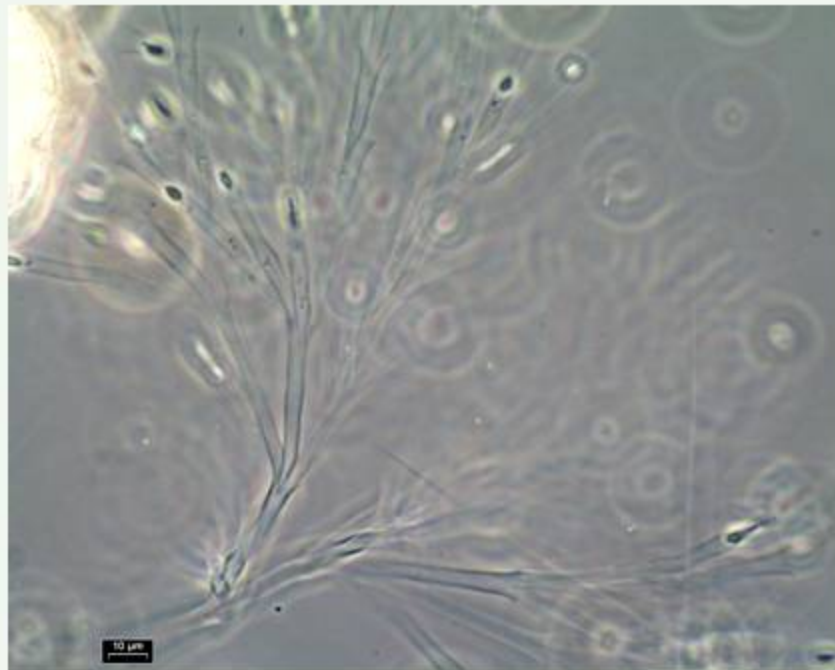


LM (coastal station Heiligendamm)

# phytoplankton – chrysophyceae

## Dinobryon balticum

abundance: spring  
life-form: in colonies  
lorica length: 50 – 66 $\mu$ m (basal), 32 – 35 $\mu$ m (distal part of the colony)  
lorica width: 3 – 5 $\mu$ m

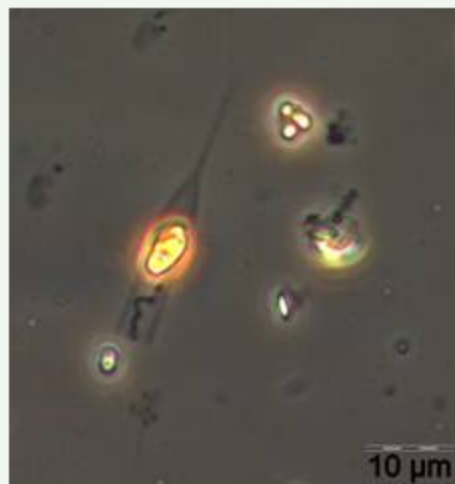


LM (coastal station Heiligendamm)

# phytoplankton – chrysophyceae

## Dinobryon borgei

life-form: solitary  
length: 15 - 21 $\mu$ m (lorica without spine), 10 - 15-(20) $\mu$ m (spine)  
lorica width: 3,5 - 4,8 $\mu$ m



LM (coastal station Heiligendamm)



# phytoplankton – chrysophyceae

## Dinobryon divergens

abundance: freshwater species, but occurs sporadically in coastal waters  
life-form: in colonies  
lorica length: 30 - 65  $\mu\text{m}$   
lorica width: 8 - 11  $\mu\text{m}$

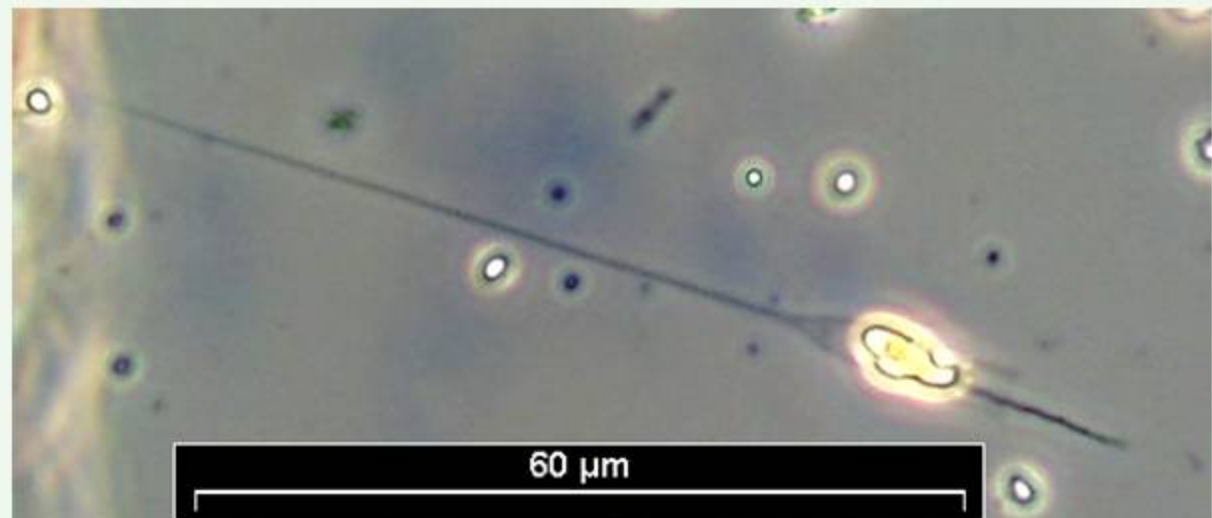


LM (Bothnian Bay)

# phytoplankton – chrysophyceae

## Dinobryon faculiferum

abundance: all year  
life form: solitary  
lorica length: 65 – 85  $\mu\text{m}$ , lorica with extremely long basal spine  
lorica width: 4 – 4.8  $\mu\text{m}$

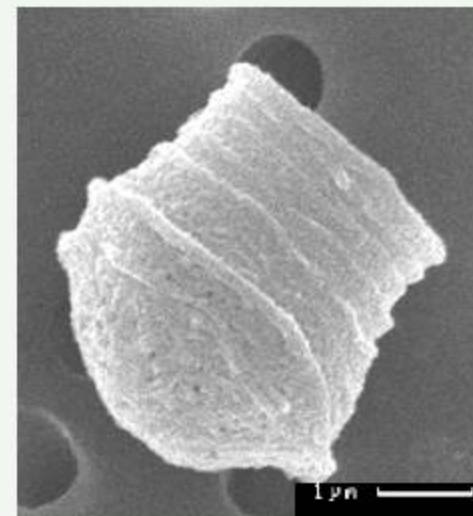


LM (coastal station Heiligendamm)

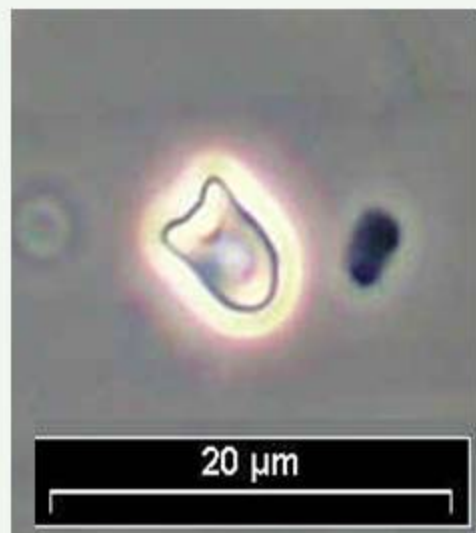
# phytoplankton - chrysophyceae

## *Ollicola vangoorii*

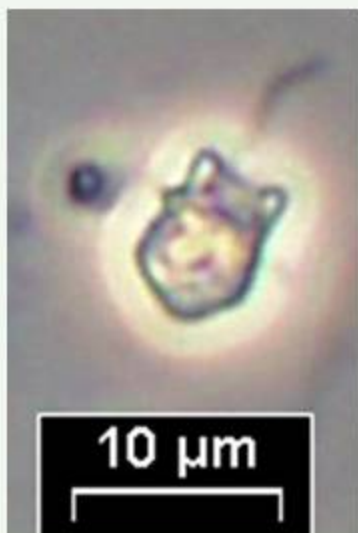
abundance: summer, autumn  
life-form: solitary  
size of lorica : 4 x 6 μm



REM (coastal station Heiligendamm)



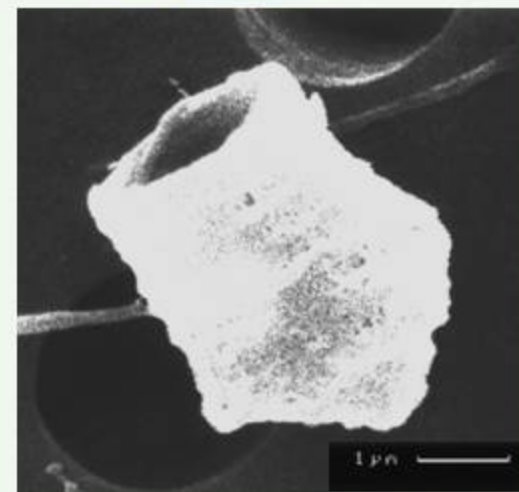
LM (Gotland Sea)



LM (Black Sea)



LM (coastal station Heiligendamm)



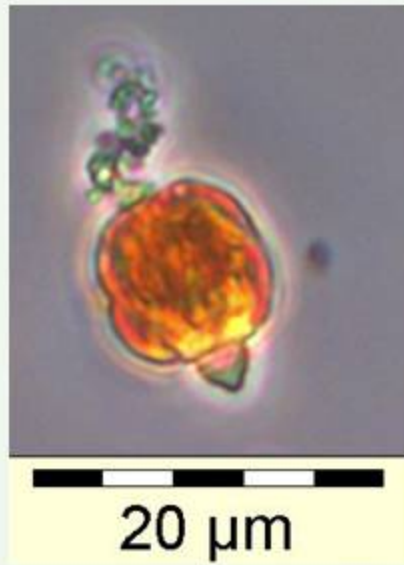
REM (Gotland Sea)



phytoplankton – chrysophyceae

## *Pseudopedinella* cf. *elastica*

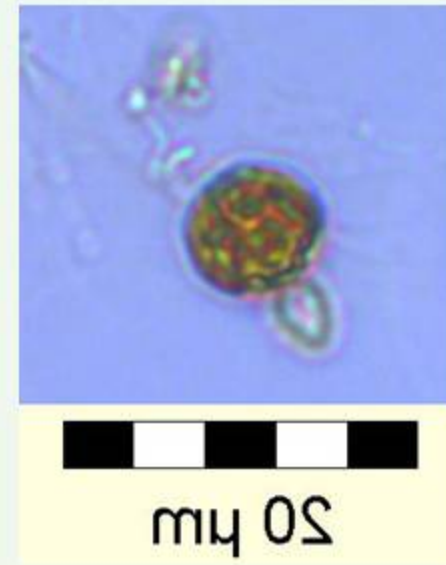
life form: solitary  
cell length: 9 -15  $\mu\text{m}$   
cell width: 10 -14  $\mu\text{m}$



LM (coastal station Heiligendamm)



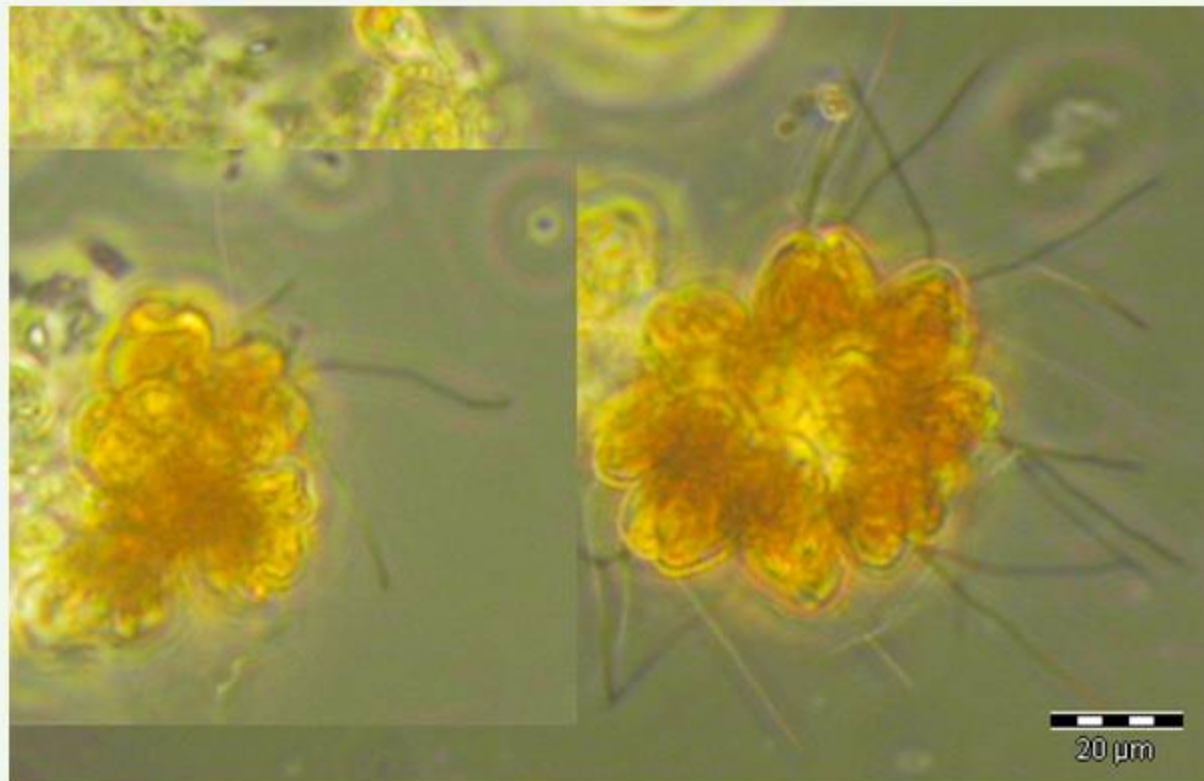
LM (Bornholm Sea)



# phytoplankton - chrysophyceae

## Synura sp.

abundance: autumn  
life-form: in colonies  
diameter of colonies: 40-60µm



LM (North Sea, HELGO)