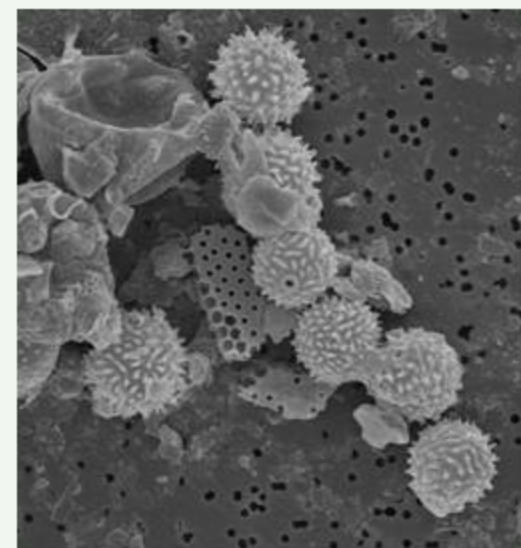
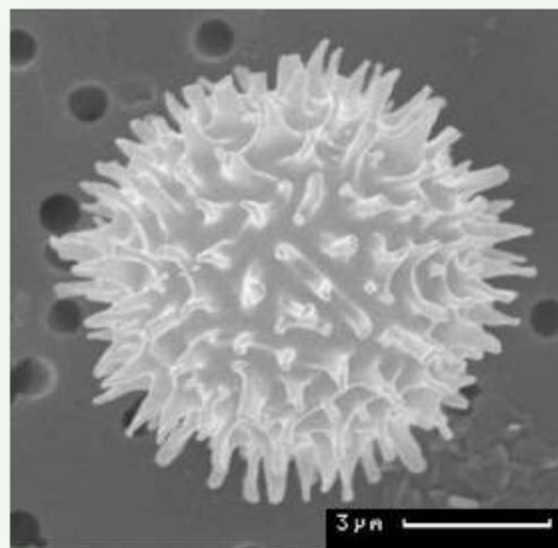


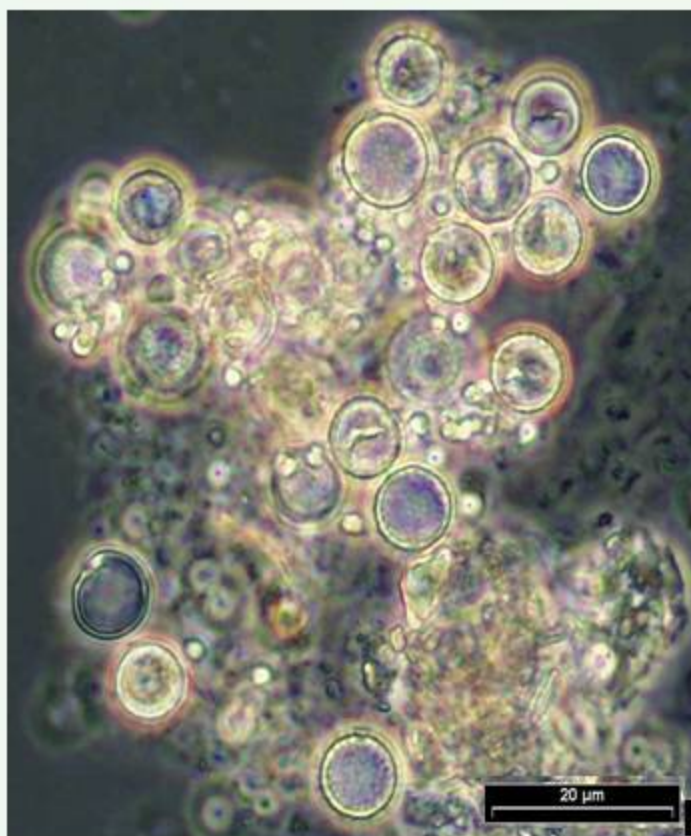
phytoplankton - cysts

chrysophycean cysts

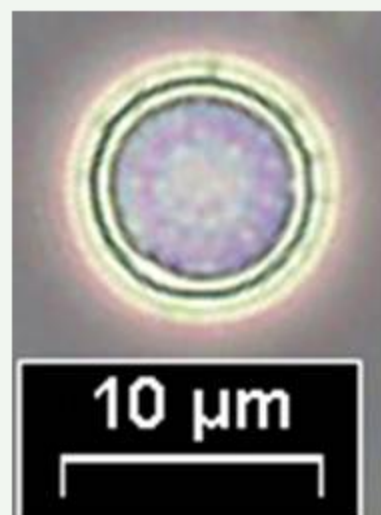
abundance: summer
size: 5 - 10 μm



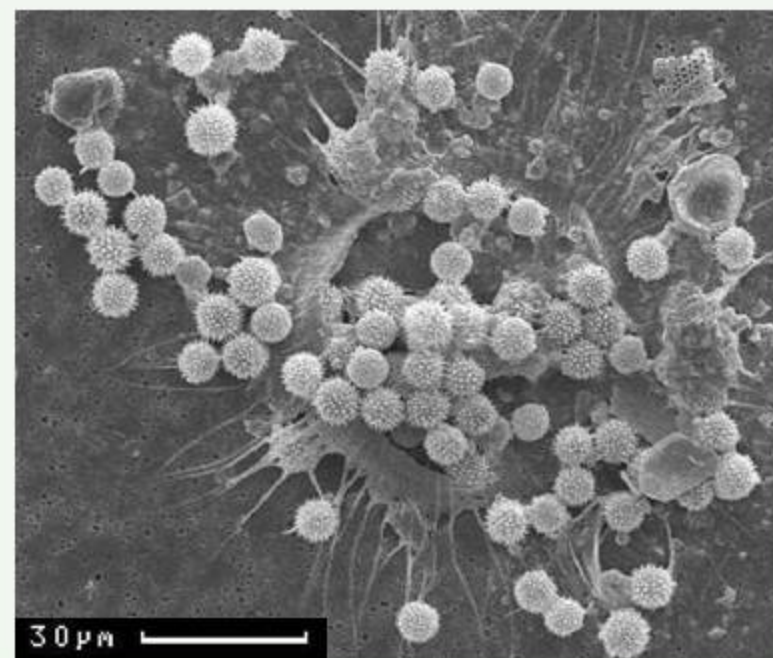
REM (Gotland Sea, sediment trap)



LM (Gotland Sea, sediment trap)



LM (coastal station
Heiligendamm)

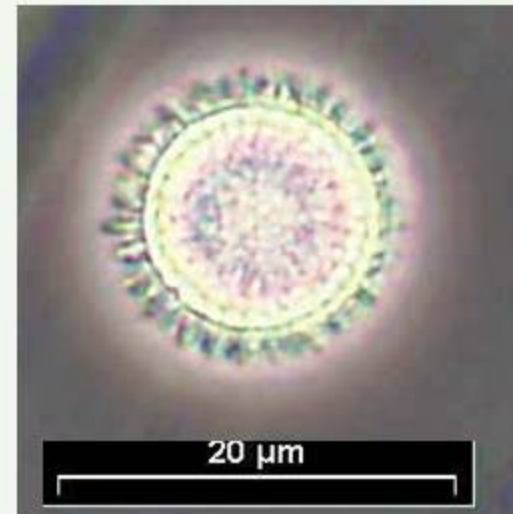
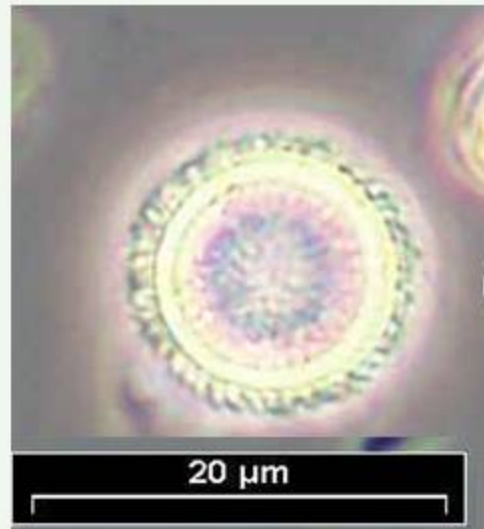


REM (Gotland Sea, sediment trap)

phytoplankton - cysts

chrysophycean cyst

abundance: ?
size: 10 - 15 μm



LM (Gotland Sea, sediment trap)