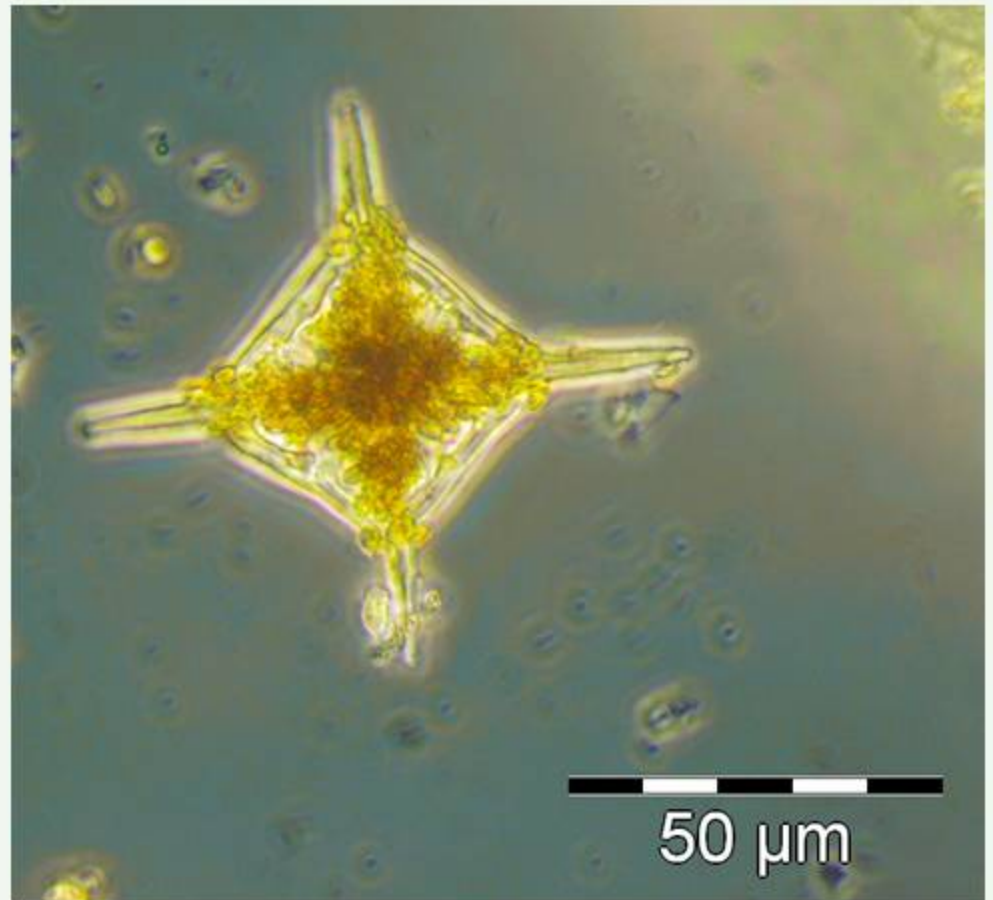


# phytoplankton - dictyochophyceae

## Dictyocha fibula

abundance: autumn  
life-form: solitary  
diameter: 10 – 45  $\mu\text{m}$

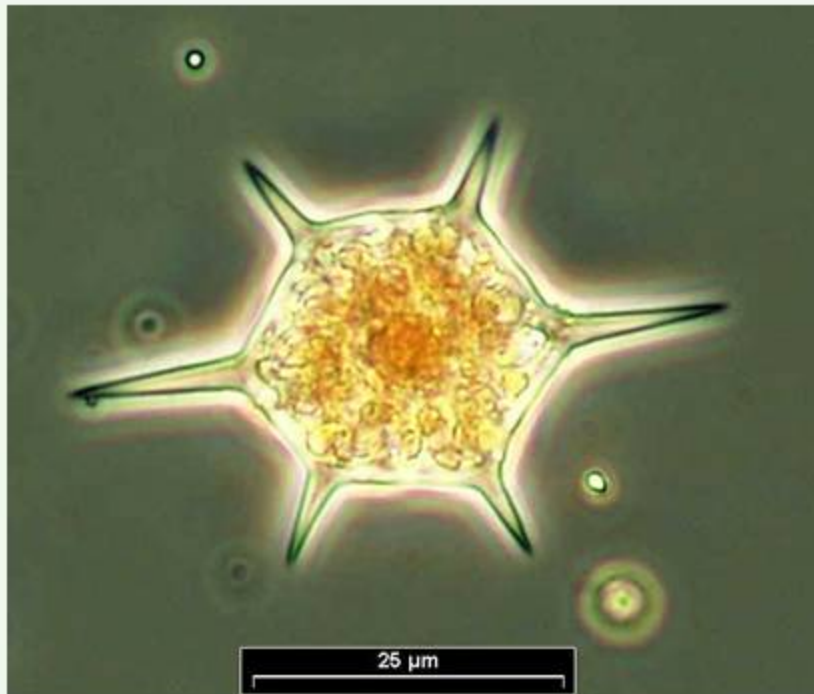


LM (North Sea, NSGR2)

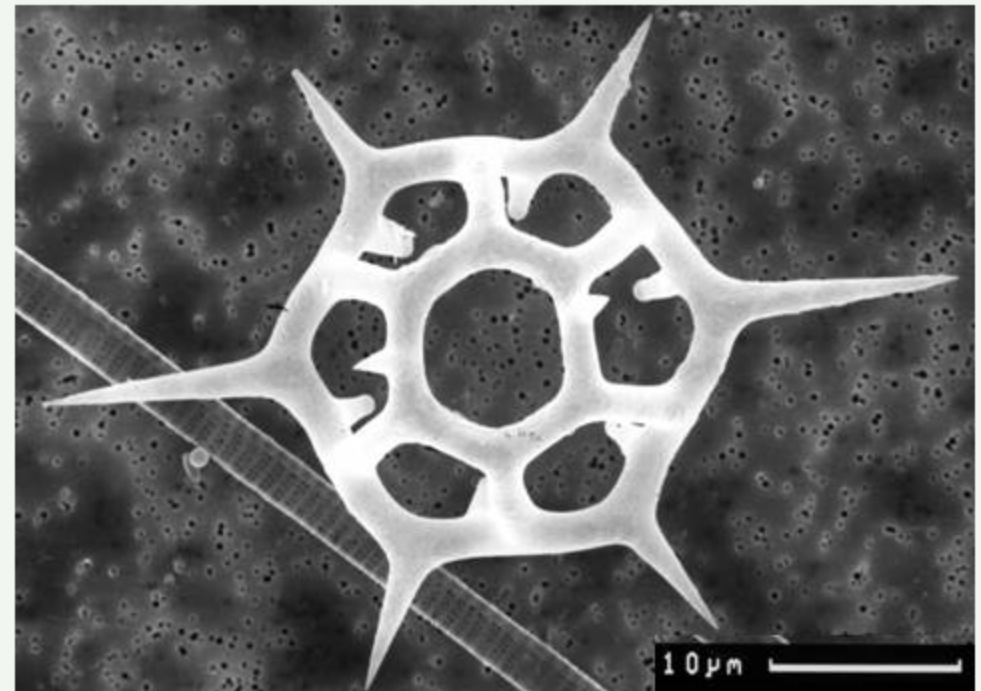
phytoplankton – dictyochophyceae

## Dictyocha speculum – skeleton bearing stage

life-form: solitary  
skeleton size: 19 – 34  $\mu\text{m}$  + spines



LM (Mecklenburg Bight)

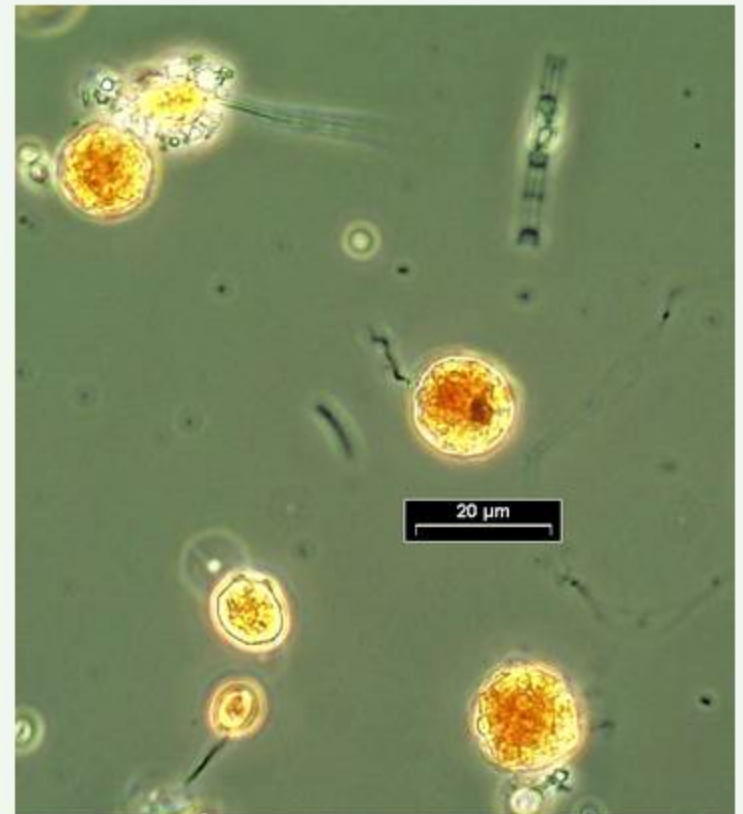
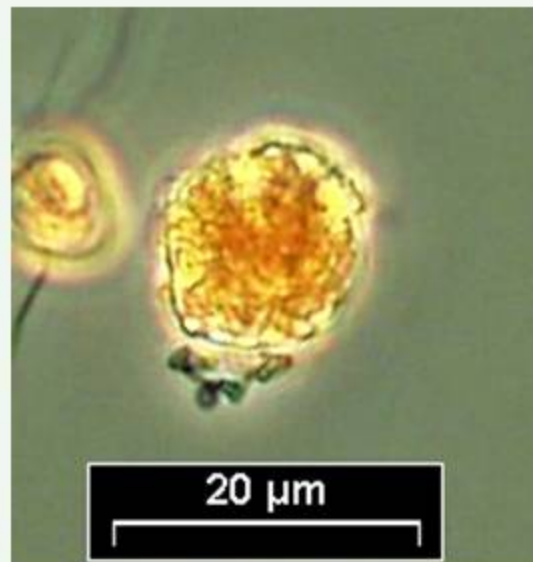
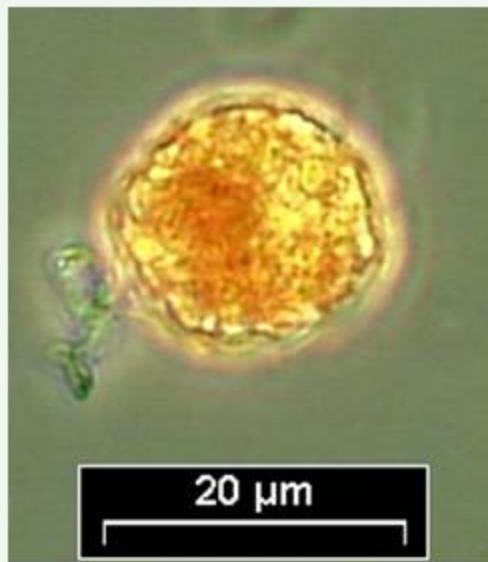


REM (Kiel Bight)

# phytoplankton – dictyochophyceae

## Dictyocha speculum – uninucleate naked stage

life-form: solitary  
diameter: 10 – 20  $\mu\text{m}$   
abundance: late spring



LM (coastal station Heiligendamm)



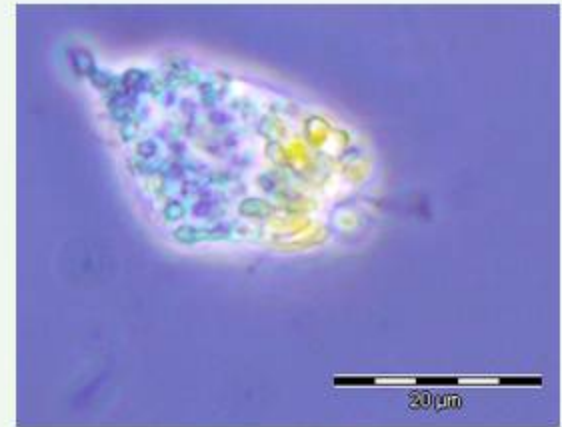
# phytoplankton – dictyochophyceae

## Verrucophora/Pseudochattonella

abundance: spring, early summer

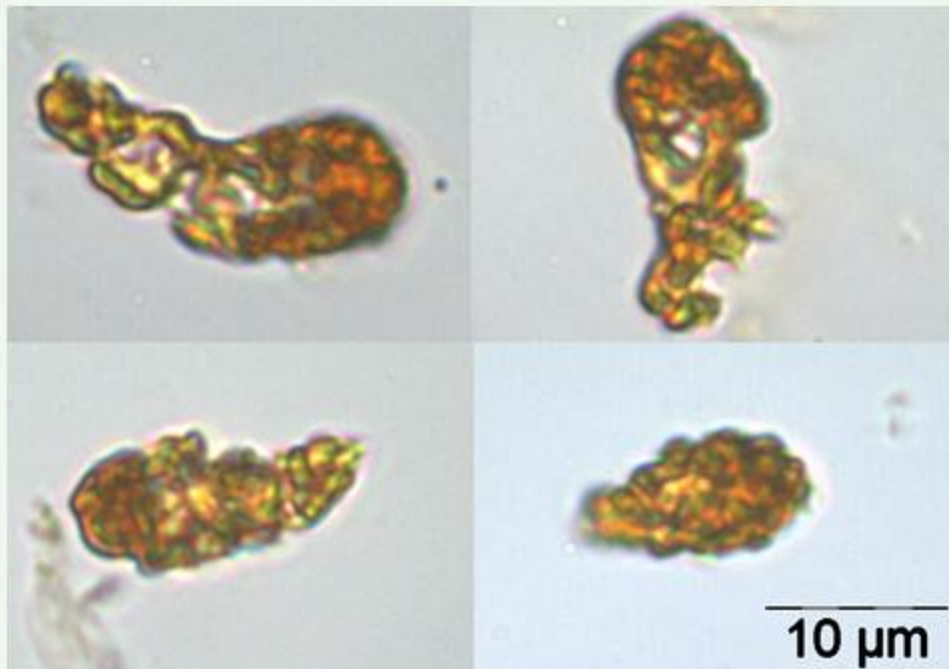
life-form: solitary

length: 25 – 32  $\mu\text{m}$

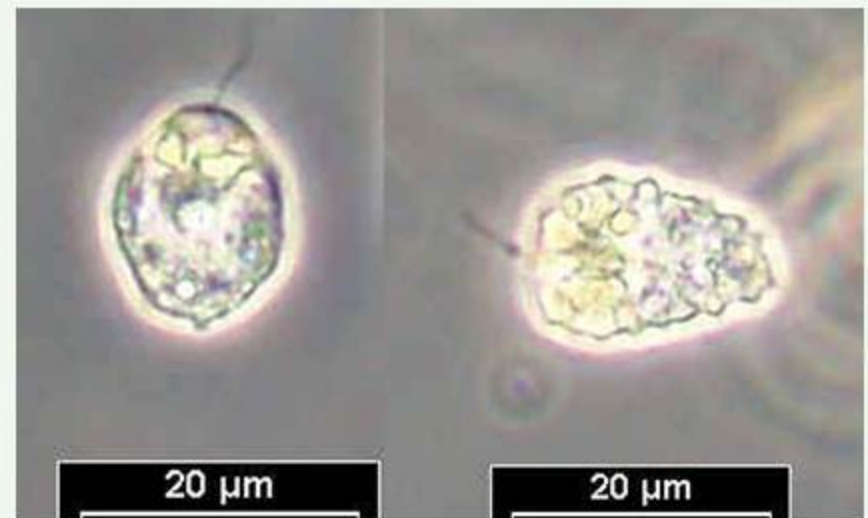


living cell

LM (coastal station Heiligendamm)



preserved with Lugol's solution  
LM (Mecklenburg Bight)



preserved with Formol solution  
LM (Gotland Sea)