

phytoplankton – euglenophyceae

Eutreptiella braarudii

life-form: solitary
cell length: 64 – 115 μm



LM (coastal station Heiligendamm)

phytoplankton – euglenophyceae

Eutreptiella sp.

life-form: solitary

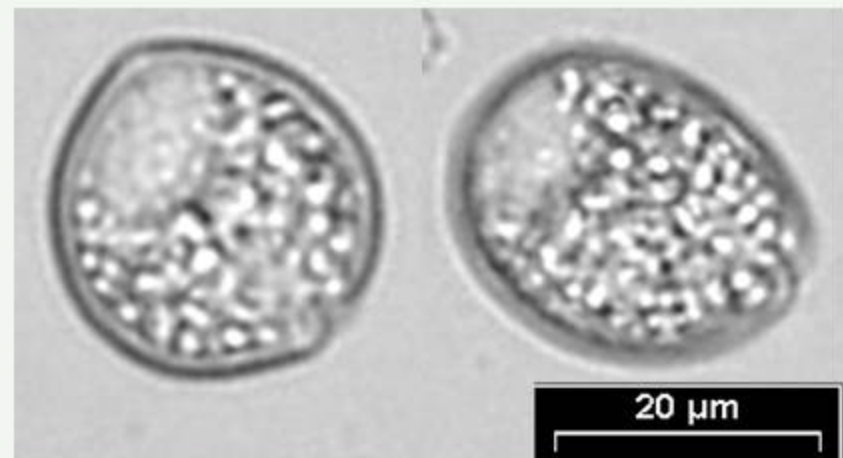
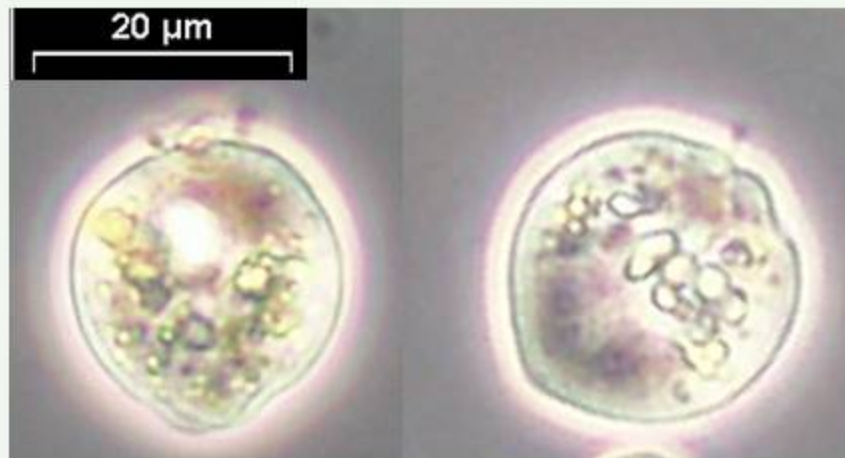


LM (coastal station Heiligendamm)

phytoplankton - euglenophyceae

Trachelomonas sp.

abundance: spring
life-form: solitary
length: 20 - 25 μm



LM (coastal station Heiligendamm)